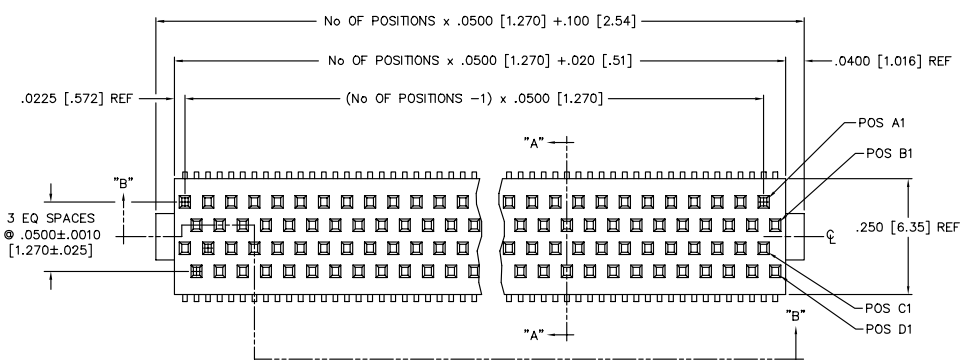


REV. X

TABLE 1	
LEAD STYLE	BOARD SPACE WHEN MATED WITH TOLC
-02	.250 [6.35]

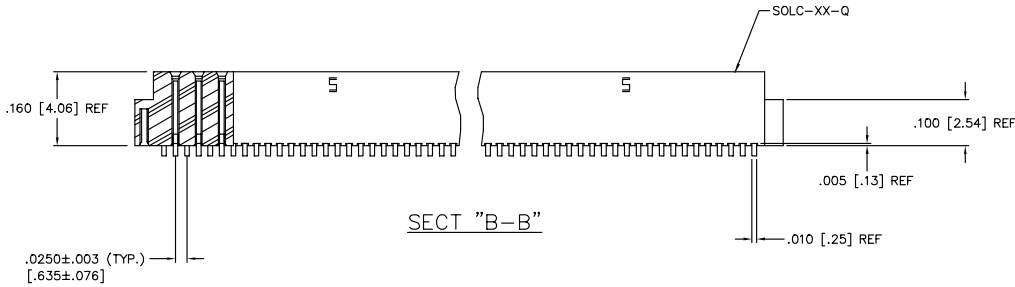
DIMENSIONS ARE IN INCHES		TOLERANCES ARE:	
ONE PLACE DECIMALS ± .1	THREE PLACE DECIMALS ± .005	ANGLES ± 5°	
TWO PLACE DECIMALS ± .01	FOUR PLACE DECIMALS ± .0020		

TITLE: QUAD ROW STAGGERED SMT SOCKET ASSEMBLY
 DWG NO: SOLC-1XX-XX-XXX-Q-X
 SHEET 1 OF 2

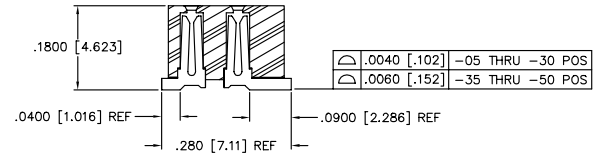


SOLC-1XX-XX-XXX-Q-X

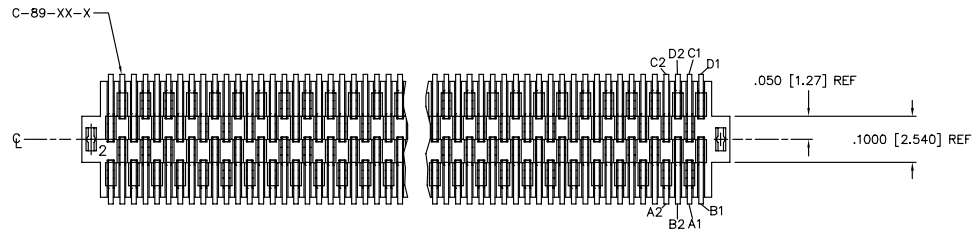
- No OF POSITIONS
 -05, -10, -15, -20, -25
 -30, -35, -40, -45, -50
 (PER ROW)
- LEAD STYLE
 -02:
 (USE C-89-XX-X)
- PLATING SPEC
 -F: SELECTIVE FLASH GOLD
 .00003 GOLD ON CONTACT AREA,
 GOLD FLASH ON TAIL
 (SEE NOTE 4)
 -L: SELECTIVE LIGHT GOLD
 .000010 GOLD ON CONTACT AREA,
 GOLD FLASH ON TAIL
 (SEE NOTE 4)
 -S: SELECTIVE GOLD
 .000030 GOLD ON CONTACT AREA,
 GOLD FLASH ON TAIL
 -STL: SELECTIVE TIN LEAD
 .000030 GOLD ON CONTACT AREA,
 TIN ON TAIL
- OPTIONS
 -LC: LOCKING CLIP (SEE FIG 2, SHT 2)
 -A: ALIGNMENT PINS (SEE FIG 3, SHT 2)
 (USE SOLC-XX-Q-A)
 -TR: TAPE & REEL
 -P: PICK & PLACE PAD
 (USE MPP-07, SEE FIG 4, SHT 2)
 -K: POLYAMIDE FILM PAD
 (.005 [.13] THICK W/ SILICONE
 ADHESIVE)(SEE FIG 5, SHT 2)
 (USE K-500-300)
- ROW SPEC
 -Q: QUAD
 (USE SOLC-XX-Q)



SECTION "A-A"



DO NOT SCALE FROM THIS PRINT



PLOT SCALE 1=1

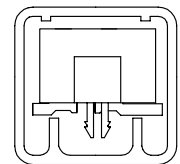
PROPRIETARY NOTE
 THIS DOCUMENT CONTAINS INFORMATION CONFIDENTIAL AND PROPRIETARY TO SAMTEC INC. AND SHALL NOT BE REPRODUCED OR TRANSFERRED TO OTHER DOCUMENTS OR DISCLOSED TO OTHERS OR USED FOR ANY PURPOSE OTHER THAN THAT FOR WHICH IT WAS OBTAINED WITHOUT THE EXPRESSED WRITTEN CONSENT OF SAMTEC INC.

- NOTE:
1. MINIMUM PUSHOUT FORCE: .5 LB.
 2. PARTS TO BE PACKAGED IN TUBES.
 3. © INDICATES A CRITICAL DIMENSION.
 4. -S PLATING CAN BE SUBSTITUTED FOR -L & -F PLATING.

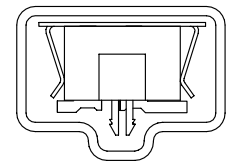
FIG. 1

PACKAGING VIEW

TABLE		
NONE	PT-1-24-11-63	TP-09
-LC, -A, -K, -K-LC, -K-A		
-P, -P-LC, -P-A	PT-1-24-01-61	TP-03



PT-1-24-11-63 TUBE
 TP-24 PLUG



PT-1-24-01-61 TUBE
 TP-03 PLUG

samtec

520 PARK EAST BLVD. NEW ALBANY, INDIANA 47150
 PHONE (812) 944-6733 P.O. BOX 1147
 CODE 55322

MADE BY: D PURVIS 03-19-96
 SOLC-1XX-XX-XXX-Q-X
 SHEET 1 OF 2